

## Multi-Hopper Grinder and Storage System

ITEM#

PROJECT

DATE




### MHG

(funnel sold separately)  
(includes 2 hoppers)

Dimensions: 29.1"H x 9.36"W x 17.5"D  
(73.9cm H x 23.8cm W x 44.5cm D)

### Features

#### Multi-Hopper Grinder and Storage System

- Convenient, front-loading hoppers allow grinding of a wide variety of coffees.
- Hoppers hold up to 6 lbs. (2.72 kg.) each of regular, decaf or specialty beans.
- Stores individual coffee grind weight profiles.
- Portion controlled for the right amount of coffee every time, with 3 batch sizes per hopper.
- Precision burrs for consistent, commercial quality grind.
- Hoppers serve as storage containers when not in the grinder. Locking lid prevents tampering. Lock sold separately (see below).
- Easy-to-clean removable hoppers.
- LCD alphanumeric display shows coffee names and diagnostics.
- Display racks promote fresh ground coffee program.
- Tall model accommodates large brew funnels.
- Four-year warranty on grinding burrs.
- International electrical configurations available.
- Preventive maintenance kit (dechaffer): 05995.0000. 

BrewWISE® intelligence means the Smart Hopper® manages the grinding and brewing process from start to finish.

- Smart Hopper tells the grinder what coffee is in it through a microchip in the hopper.
- Grinder adjusts the grind time for each batch to deliver just the right grind volumes.
- Grinder communicates coffee name to the Smart Funnel during grinding process.
- BrewWISE brewer reads the information in the Smart Funnel, adjusts the recipe, and brews a perfect batch of coffee.
- Create coffee recipe cards with BrewWise recipe writer on your PC.

For current specification sheets and other information, go to [www.bunn.com](http://www.bunn.com).

### Related Products

#### 2 position rack

Product No.: 36760.0000

Dimensions: 11.37" H x 9.76" W x 15.74" D  
(28.88cm H x 24.79cm W x 39.98cm D)



#### 4 position rack

Product No.: 36760.0001

Dimensions: 24.25" H x 9.76" W x 15.74" D  
(61.6cm H x 24.79cm W x 39.98cm D)



#### Hopper Partition Assembly

Product No.: 36053.0000

Allows for smaller batches of coffee so beans stay fresh



#### Hopper Safety Lock

Product No.: 29734.1000



#### Hopper/Lid Assembly

Product No.: 36845.0000

Dimensions: 11.75" H x 4.23" W x 15.9" D  
29.85cm H x 10.74cm W x 4.39cm D

#### Coffee Container

Product No.: 05792.0000



#### Coffee Bowl

Product No.: 48520.0000

#### Standard Grind Burr Set

Product No.: 05861.1002

#### Fine Grind Burr Set

Product No.: 11285.1000

#### Dechaffer

Product No.: 05995.0000

Product No.: 05995.1000 (6 pack)

#### BrewWISE® Recipe Writer (BRW) 230V

Product No.: 34444.0000



#### Recipe Card

Product No.: 34447.0000

- Program a recipe to be used on brewer or grinder.



#### Ad Card

Product No.: 34448.0000

- Program a message to appear on the brewer's display.



Model

MHG

Agency Listing



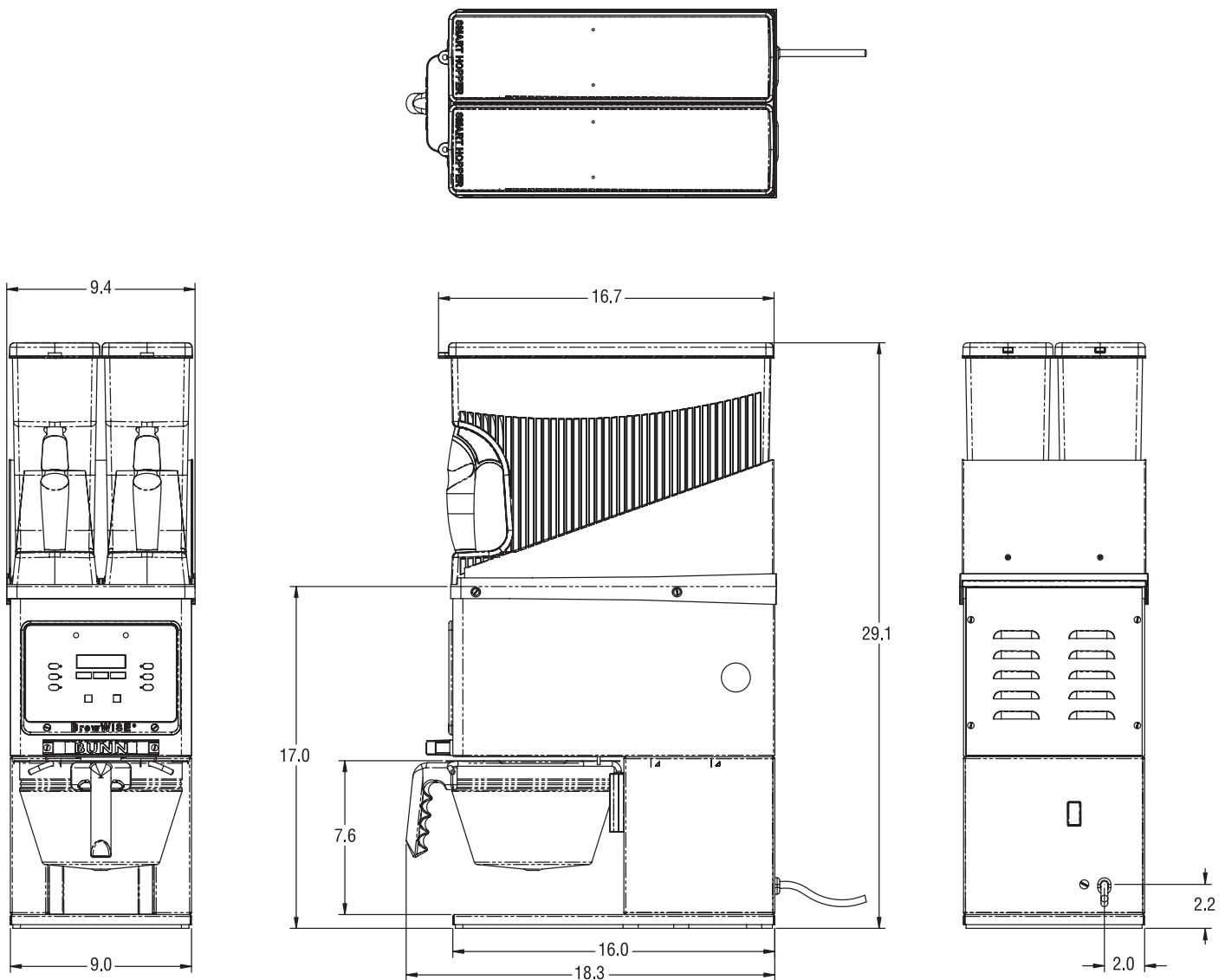
## Dimensions & Specifications

Model	Product #	Volts	Amps	Capacity	Cu. Ft.	Shipping Weight	Cord Attached
MHG (SST)	35600.0020	120	11	6 lbs. per hopper	6.5 ft <sup>3</sup>	70 lbs.	Yes*
MHG (Black)	35600.0022	120	11	6 lbs. per hopper	6.5 ft <sup>3</sup>	70 lbs.	Yes*

Accepts large brew funnels for System III, Dual, and other large BUNN brewers. \*Power cord (NEMA 5-15P) 15 Amp-120V machine only.

Electrical: 2-wires plus ground service rated 120V, 60Hz, circuit required, 3/4 HP motor.

U.S. (120v 15a) and International models



Bunn-O-Matic® Corporation - 1400 Stevenson Drive Springfield, Illinois 62703 • 800-637-8606 • 217-529-6601 • Fax 217-529-6644 • www.bunn.com

BUNN® practices continuous product research and improvement. We reserve the right to change specifications and product design without notice. Such revisions do not entitle the buyer to corresponding changes, improvements, additions or replacements for previously purchased equipment.

All dimensions shown in inches.

11/13 © Bunn-O-Matic Corporation